



The Chatsworth - Platinum Contemporary

The design of the Platinum Contemporary park home revolves around the kitchen and bathroom. The kitchen is a bold example of modern living. Spacious, light and equipped with integrated fridge/freezer, dishwasher and washing machine. Vaulted ceilings to the lounge, kitchen and diner emphasise the light and airy feel of this home. A choice of tasteful colour schemes are available.

The luxurious bathroom has a hint of decadence. Recline in the whirlpool bath with a glass of wine and let your cares wane away.

Home Details

Price from: £375,000

Home Type: Residential

Bedrooms: 2/3

Pitch Fee: £189 p.c.m

Ongoing living costs/info:

Gas supplied by Calor - Bulk Tank

Council Tax - Band 'A'

Electricity paid to main supplier

Water & Sewerage billed Quarterly

- 10 year warranty
- Gas Central Heating
- PVCu double glazing
- En-suite shower room
- Fully integrated kitchen
- Living room approx: 12' x 20'
- Kitchen area approx: 16' x 10'
- Bedroom 1 approx: 10' x 10'
- Bedroom 2 approx: 11' x 10'



Available in a range of sizes:

42 x 20 ft **50 x 20 ft**
46 x 20 ft

T 01403 711419 **M** 07958 121 516

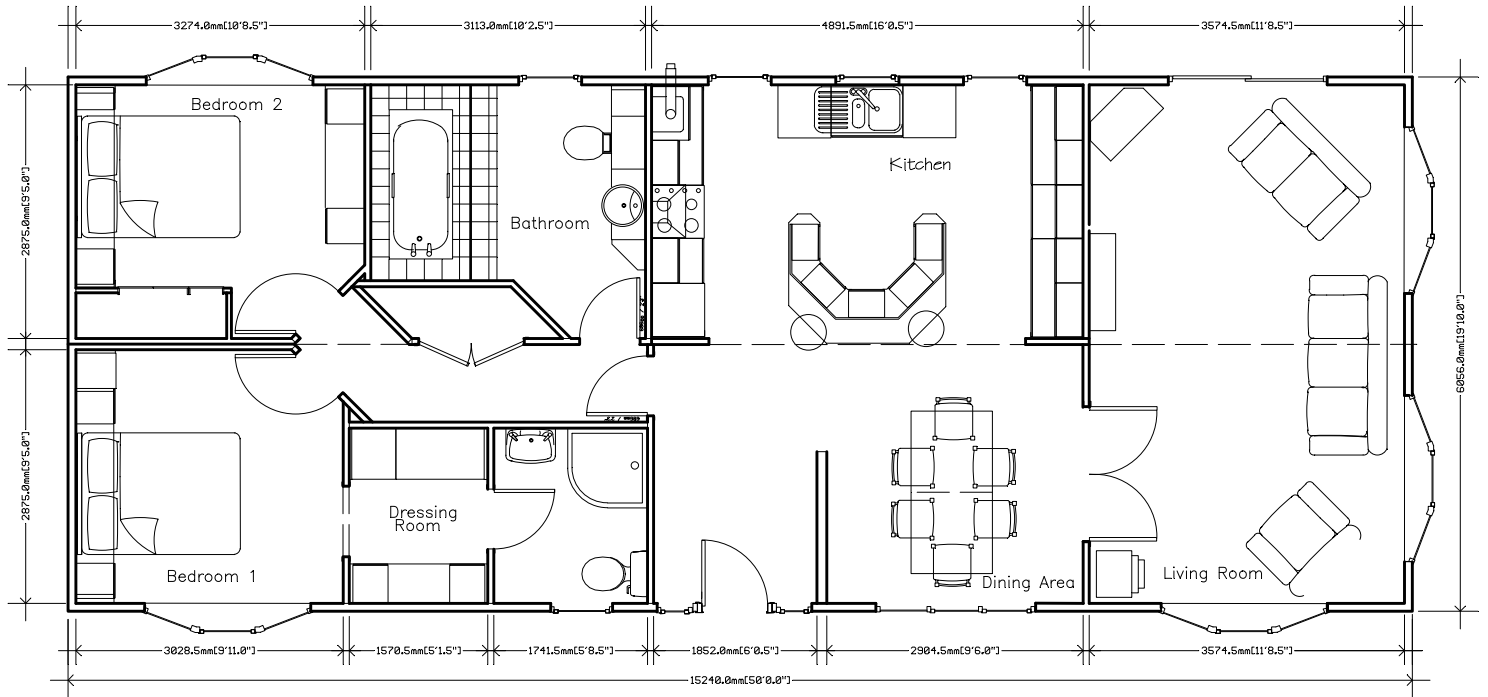
E info@oaklandsparkhomes.co.uk **W** www.oaklandsparkhomes.co.uk

Oaklands Park | Emms Lane | Brooks Green | Horsham | West Sussex | RH13 0TR

In association with



Oaklands Park
QUALITY LIVING



An example layout, more layouts available upon request



“ The Platinum Contemporary has all the ingredients for the superior living experience. ”