



The Windsor

The Windsor benefits from a combination of render and cladding which help to emphasise the bay windows. Combine that with decorative corner brick stones and the feature clad gable complete with diamond window, the Windsor park home is sure to charm those who set their eyes on it.

Light streams into the dining room via the large fully glazed walk-in bay. Vaulted ceilings to the lounge, diner and kitchen, create a desirable and spacious atmosphere in the home. If luxury is on your agenda, then the fully tiled bathroom and en-suite are sure to please you.

Home Details

Price from: £325,000

Home Type: Residential

Bedrooms: 2/3

Pitch Fee: £189 p.c.m

Ongoing living costs/info:

Gas supplied by Calor - Bulk Tank

Council Tax - Band 'A'

Electricity paid to main supplier

Water & Sewerage billed Quarterly

- 10 year warranty
- Gas Central Heating
- PVCu double glazing
- En-suite shower room
- Fully integrated kitchen
- Living room approx: 20' x 10'
- Kitchen area approx: 8' x 8'
- Utility area approx: 5' x 8'
- Bedroom 1 approx: 13' x 10'
- Bedroom 2 approx: 9' x 10'



Available in a range of sizes:

36 x 20 ft **44 x 20 ft**
40 x 20 ft **46 x 20 ft**

T 01403 711419 **M** 07958 121 516

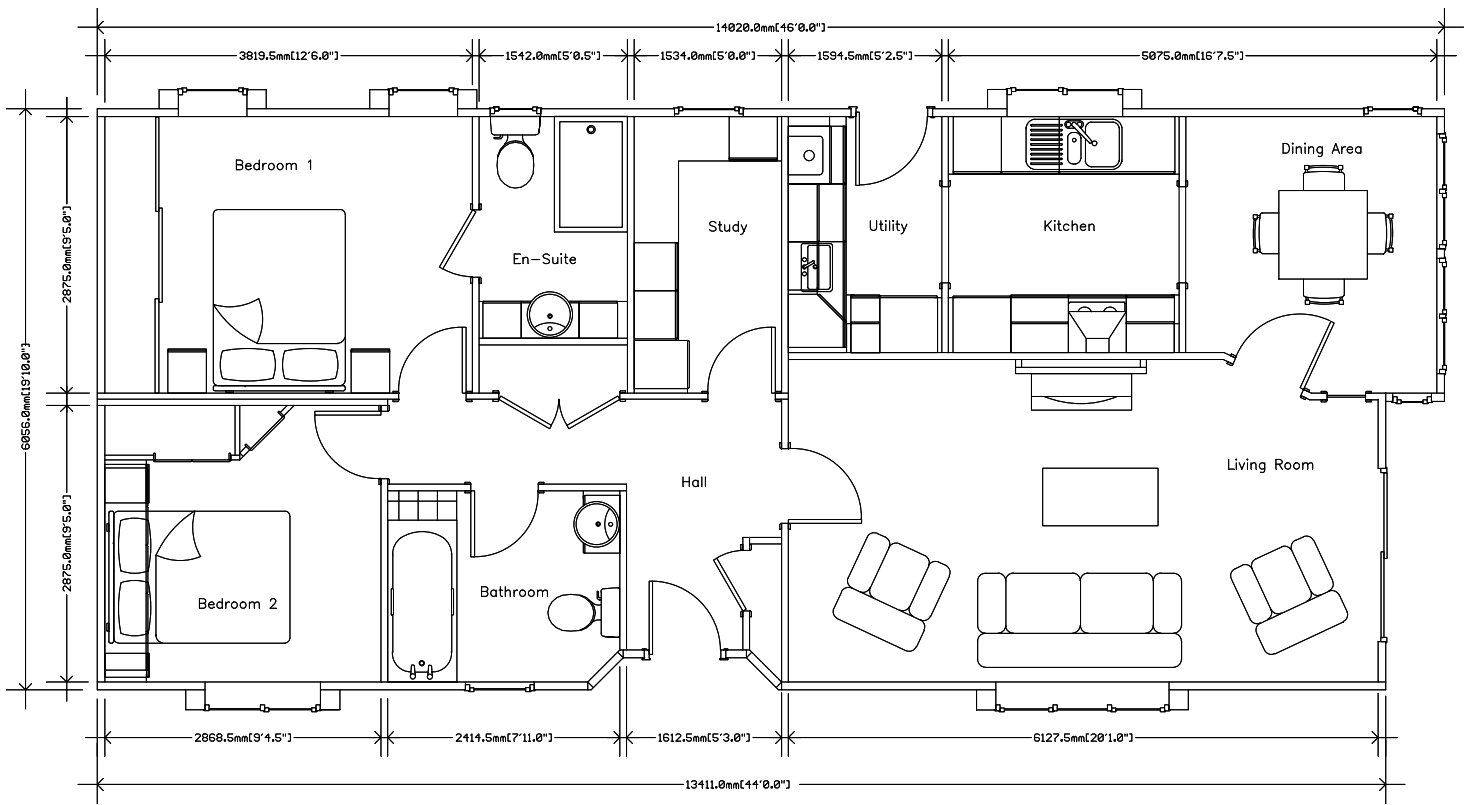
E info@oaklandsparkhomes.co.uk **W** www.oaklandsparkhomes.co.uk

Oaklands Park | Emms Lane | Brooks Green | Horsham | West Sussex | RH13 0TR

In association with



Oaklands Park
 QUALITY LIVING



An example layout, more layouts available upon request



“ The Windsor meets the needs of the most discerning customers who want nothing but exceptional value. ”