



# The Woburn

Externally, the Woburn is striking with its box bays and inset front door, complemented with feature cladding to emphasise its modern angular shapes.

If fine cuisine is to your liking, then there's no better place to prepare your meals than in the spacious kitchen. Incorporating a well designed open plan kitchen/diner, keeping your guests entertained whilst preparing your meals becomes an effortless task.

The luxurious bathroom is a desirable space for those relaxing moments when you just want to switch off, relax, and soak in a warm bath under candlelit alcoves.

## Home Details

**Price from:** £325,000

**Home Type:** Residential

**Bedrooms:** 2/3

**Pitch Fee:** £189 p.c.m

**Ongoing living costs/info:**

Gas supplied by Calor - Bulk Tank

Council Tax - Band 'A'

Electricity paid to main supplier

Water & Sewerage billed Quarterly

- 10 year warranty
- Gas Central Heating
- PVCu double glazing
- En-suite shower room
- Fully integrated kitchen
- Living room approx: 15' x 12'
- Kitchen area approx: 13' x 10'
- Utility area approx: 8' x 5'
- Bedroom 1 approx: 19' x 10'
- Bedroom 2 approx: 11' x 10'



Available in a range of sizes:

**36 x 20 ft**      **44 x 20 ft**  
**40 x 20 ft**      **50 x 20 ft**

**T** 01403 711419    **M** 07958 121 516

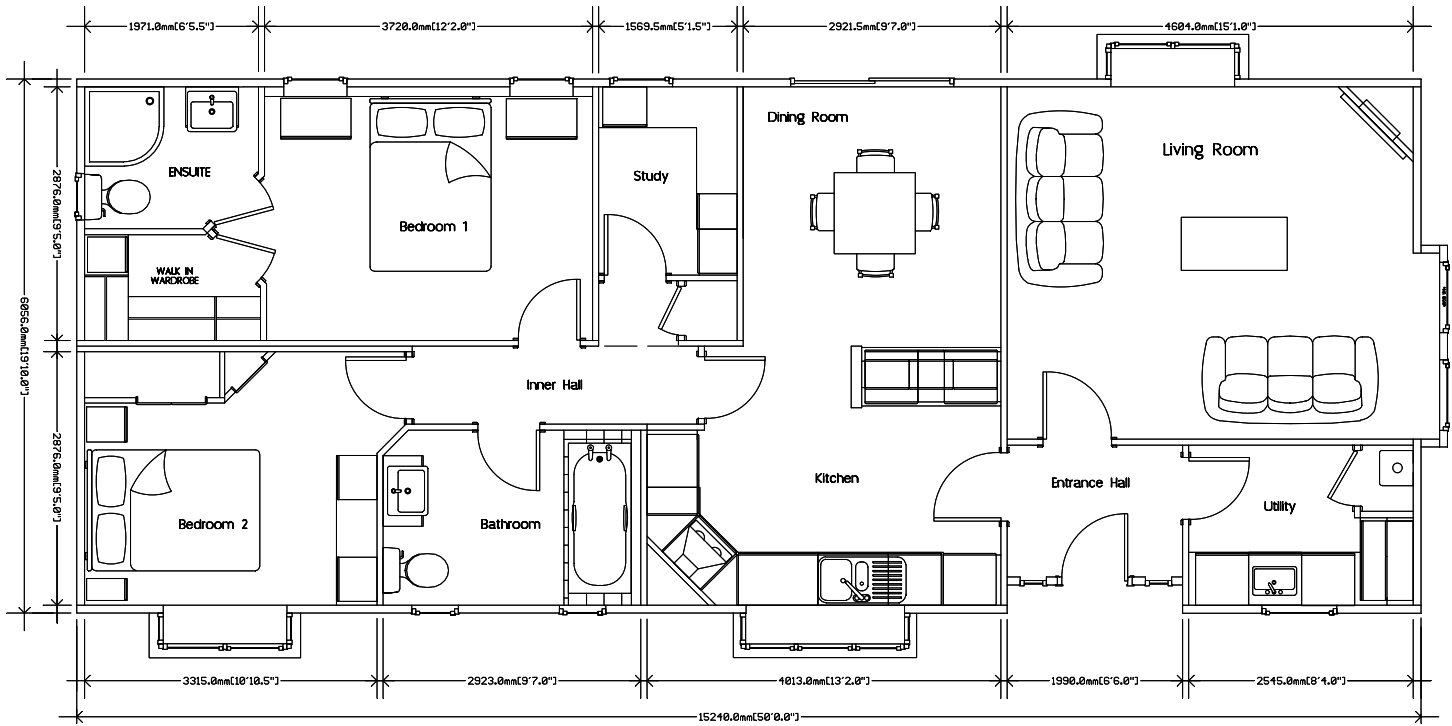
**E** info@oaklandsparkhomes.co.uk    **W** www.oaklandsparkhomes.co.uk

Oaklands Park | Emms Lane | Brooks Green | Horsham | West Sussex | RH13 0TR

In association with



**Oaklands Park**  
 QUALITY LIVING



An example layout, more layouts available upon request



*“The Woburn is a truly exceptional home for those who seek the perfect place to stylishly unwind.”*